

# State of Wyoming Corner Record

(In compliance with the **CORNER PERPETUATION AND FILING ACT**, Wyoming Statutes, 1997 Section 33-29-140 et. seq., and the Rules and Regulations of the Board of Professional Engineers and Professional Land Surveyors)

Reverse side of this form may be used if more space is needed.

Record of original survey and citation of source of historical information (if corner is lost or obliterated). Description of corner monumentation evidence found and/or monument and accessories established to perpetuate the location of this corner. Sketch of relative location of monument, accessories, and reference points with course and distance to adjacent corner(s) (if determined in this survey). Method and rationale for reestablishment of lost or obliterated corner.

**G.L.O. RECORD:**

VA.15°47'E

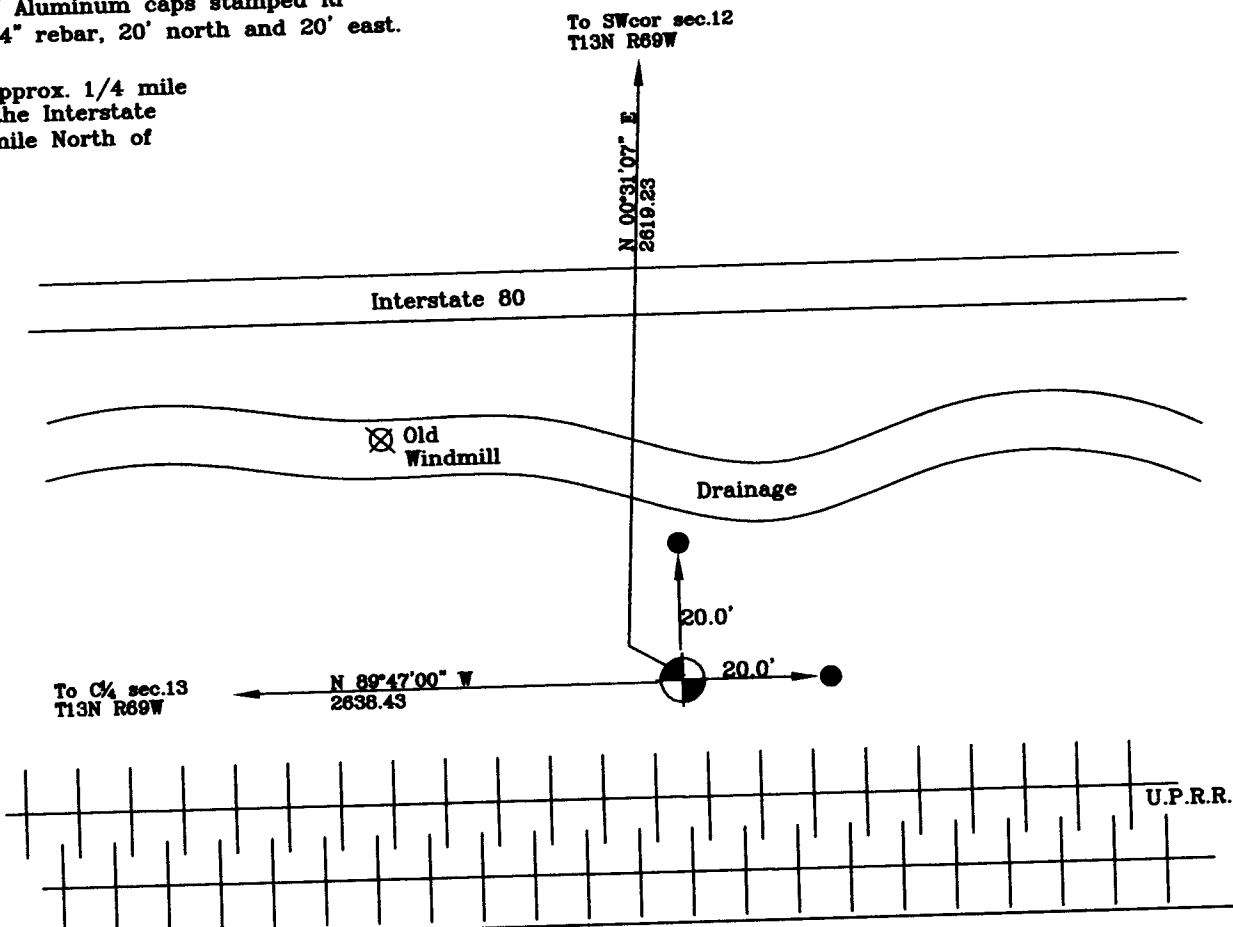
From corners to sections 13,14,23,24  
ran north between sections 13,14  
40.00 chains. Set granite boulder  
16x8x5 for 1/4 section corner.

**AT THE CORNER:**

Found 3 1/4" cap stamped as shown.

Set two 2" Aluminum caps stamped RP  
on 5/8" X 24" rebar, 20' north and 20' east.

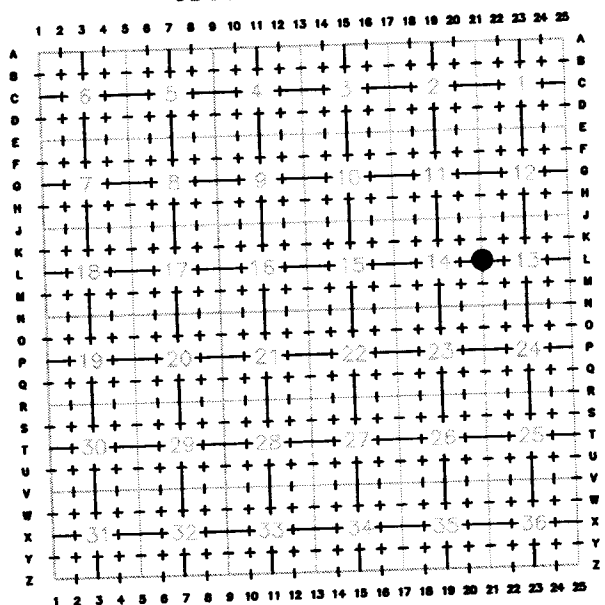
Point is approx. 1/4 mile  
south of the Interstate  
and 1/4 mile North of  
RR tracks



Date of Field Work: 10/09/07

Office Reference: GRAHAM

**Cross Index Plat**



Firm/Agency, Address

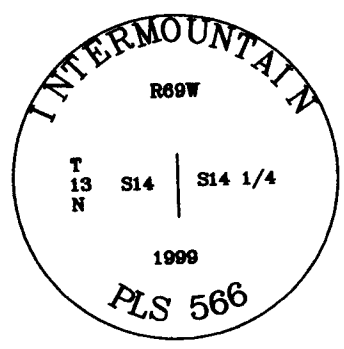
Western R&D, Ltd.  
5809 Yellowstone Rd., Suite B  
Cheyenne, Wyoming 82009

This corner record was prepared by me or under my direction and supervision.

SEAL & SIGNATURE

Telephone Number: (307) 632-5656

● Found monument, left in place



Corner Name West Quarter Corner Section 13, T 13 N, R 69 W, 6th P.M.

Cross-Index No.: L-21

County: Laramie Wyoming

SBRPEPLS/PLSW: March 1994; PLSW January 1998